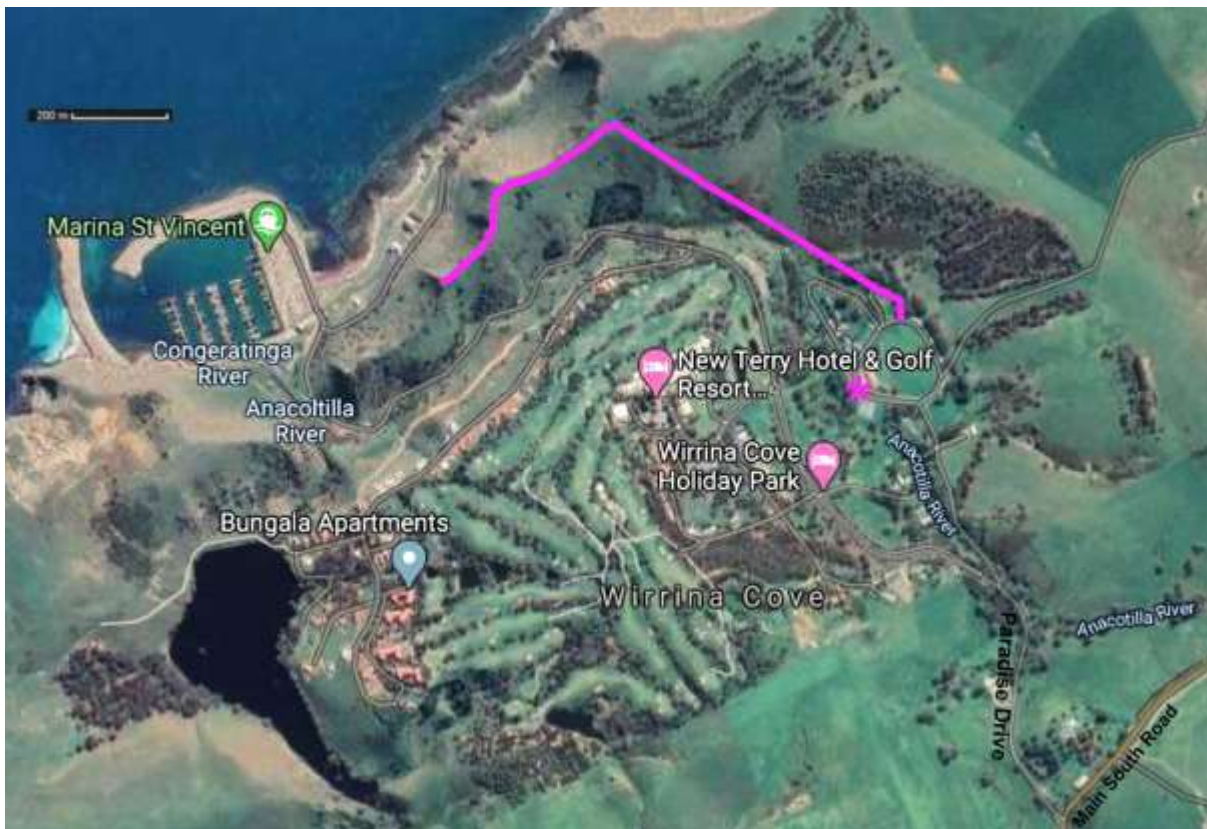


11. WIRRINA COAST

Terrain: Moderate

Distance: 2.6 km return

From Normanville take Main South Rd to the turnoff (Paradise Drive) to Wirrina Cove. Follow Paradise Drive to the turnoff on your right down to Wirrina Cove Holiday Park. As a courtesy, call into the park office (pink asterisk on map), say hello and let them know that you're doing the walk. Drive or walk to the other side of the oval. Go through a small gate which will give you access to a trail leading up the hillside to the clifftop. From the top of the hill you can enjoy superb views along the coast back toward Normanville and beyond, and south toward the resort and marina. From here you can walk south along the clifftop until you reach a point where you can look down over the marina. You then need to follow the same route back to your car.



© 2020 Normanville Natural Resource Centre
<https://www.nnrc.com.au/>